

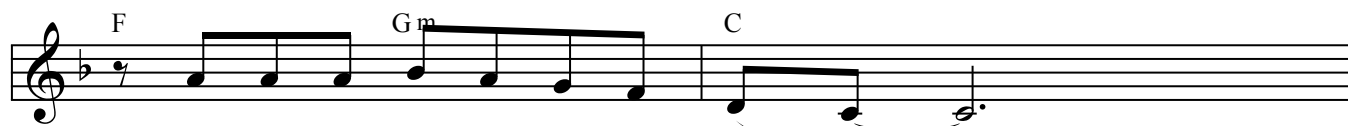
# Out of the darkness and into the light

Mary Grigolia

♩ = 100



Out of the dark - ness and in - to the light,



my leaves are rea - dy to un furl - - - .  
my wings are rea - dy to un - furl - - - .  
my life is rea - dy to un - furl - - - .  
our lives con - tin - ue to un - furl - - - . *4th verse, Fine*



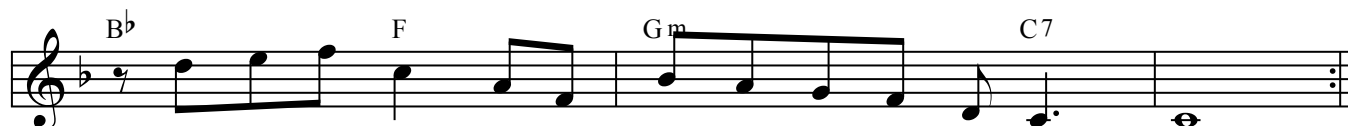
Out of the dark - ness and in - to the light,



my dreams will hold me as I grow.  
my dreams will hold me as I grow.  
my dreams will hold me as I grow.



Sleep in the dark earth though cold winds blow.  
Just from my shell here in - side my nest.  
Lear - ning to trust in the dark of night.



Wake to the light, it's the on - ly dance I know - .  
Safe in the warmth of my mo - ther's lo - ving breast - .  
Si - lence and dreams are my guides in to the light - .

*3rd verse, D.C. al Fine*